

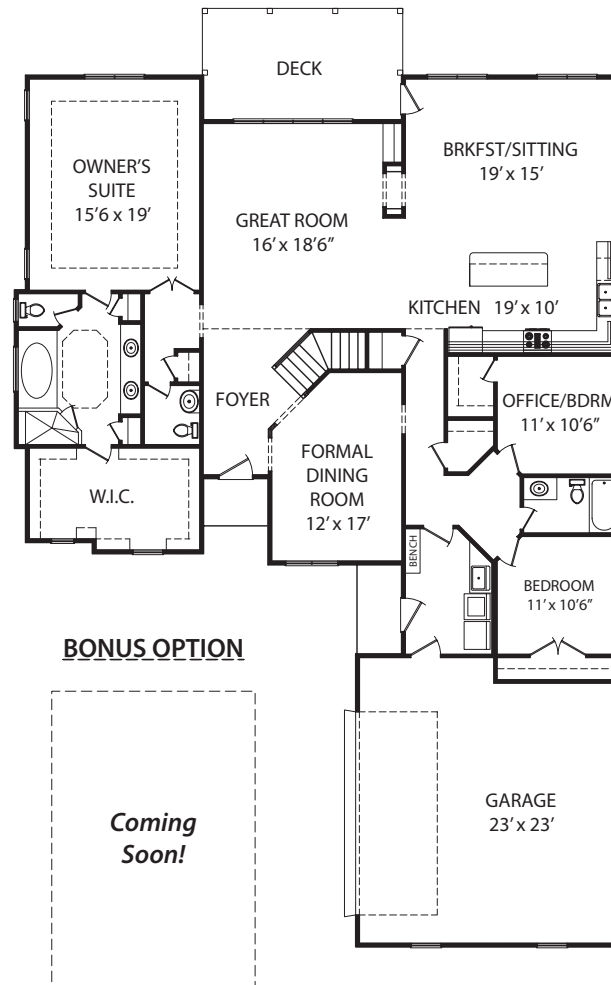
the *Gettysburg*

Main 2,430 sqft.

3 Bedrooms, 2.5 Baths

Oversized 2-Car Garage

Covered Entrance &
Rear Deck



Walk-up Bonus and Brick Crawlspace Options Available as Shown. Front Porch Options Available per Elevation.
Bonus Option includes Hobby Room or may include Bedroom & Bath Suite.

The *Homestead*
COLLECTION

For more information, please contact a Province Grande Sales Associate at
(919) 554-0166 or online at www.provincegrande.com.



ELEVATION I

- ❧ Craftsman style
- ❧ Low maintenance stone, shake and non-rot siding exterior
- ❧ Custom trimwork
- ❧ High-pitch shingle roof with copper accents
- ❧ Covered front porch with round-top transom window
- ❧ Carriage-style garage entrance



ELEVATION II

- ❧ Traditional style
- ❧ Low maintenance brick and non-rot siding exterior
- ❧ Custom masonry and round-top window details
- ❧ High-pitch hip roof with copper accents and dormer
- ❧ Covered front entrance
- ❧ Carriage-style garage entrance



ELEVATION III

- ❧ European style
- ❧ Low maintenance stone, non-rot siding, board & batten exterior
- ❧ Custom trimwork
- ❧ High-pitch hip roof with custom barrel-top dormers
- ❧ Covered front entrance with round-top transom window
- ❧ Carriage-style garage entrance

All brick options available in each elevation. Price per plan.
Elevation shown on crawlspace with brick foundation.

For more information, please call (919) 554-0166 or visit www.provincegrande.com.